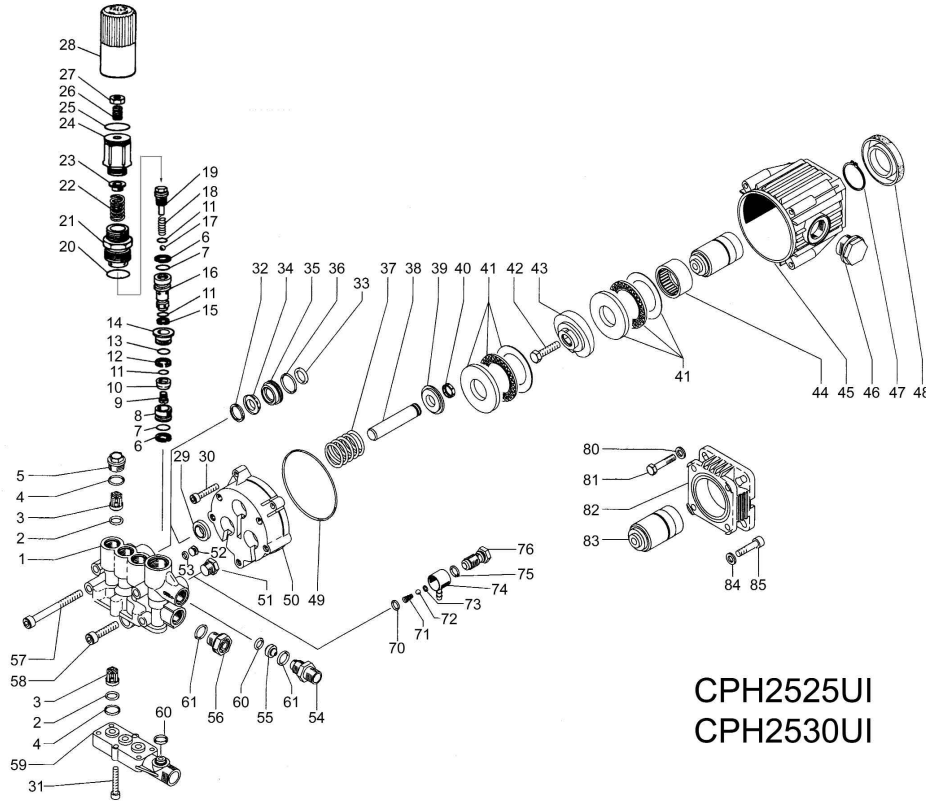


# CPH Series

**GENERAL PUMP** *A member of the Interpump Group*

## PARTS LIST

Item	Part	Description	Qty.
1	57120341	Manifold	1
2	701014	O-ring	6
3	36711601	Valve Assy	6
4	701016	O-ring	6
5	98213500	Valve cap	3
6	90506500	Anti-Ext ring	2
7	701614	O-ring	2
8	36316466	Seat	1
9	99150900	Screw	1
10	36319066	Spherical Valve	1
11	90357500	O-ring	3
12	90507500	Anti-Ext ring	1
13	701014	O-ring	1
14	36316570	Guide	1
15	90502500	Anti-Ext ring	1
16	36318970	Piston	1
17	97480000	Ball	1
18	94733200	Spring	1
19	36318870	Stem	1
20	701002	O-ring	1
21	36318470	Guide	1
22	94743600	Spring	1
23	36316970	Spring plate	1
24	36318570	Regulator knob	1
25	701019	O-ring	1
26	99305400	Set screw, M8	1
27	92221800	Nut, M8	1
28	36318751	Handle	1
29	90156700	Oil Seal	3
30	99191400	Screw	4
31	99191200	Screw	6
32	51100051	Head Ring	3
33	90383500	O-ring	3
34	90262000	Packing 15mm	3
35	51080070	Packing Supt 15mm	3
36	90360400	O-ring	3
37	94766400	Spring	3
38	57040102	Piston Assy	3
39	57210370	Spring Plate	3
40	57208551	Clip	3
41	91834700	Bearing Assy, Drive	2
42	99306800	Screw	1
43	57211222	Wobble Plate, 2525	1
	57211122	Wobble Plate, 2530	1
44	91845500	Needle Bearing	1
45	57010622	Back Housing	1
46	510276	Plug	1
47	90069500	Clip	1
48	90167500	Seal	1
49	90391700	O-ring	1
50	57210422	Body, Piston Guide	1
51	98205700	Plug	1
52	57210070	Plug	1
53	90381400	O-ring	1
54	10007870	3/8" BSP-M Nipple	1
	10014770	M22 Nipple (optional)	1
55	10030766	Nozzle 1.8mm	1
	10015166	Nozzle 2.0mm	1
56	98209000	Plug, Plastic	1
57	99321000	Screw	4
58	99306900	Screw	1
59	57140022	Inlet Manifold	1
60	90382300	O-ring	2
61	90383300	O-ring, nozzle	2
70	701012	O-ring	1
71	94821700	Conical spring	1
72	97478200	Ball	1
73	701501	O-ring	1
74	36260451	Fixed Injector	1
75	701013	O-ring	1
76	36256370	Banjo bolt, Injector	1
80	96701400	Washer	4
81	99273000	Screw	4
82	ZFWWS	Flange	1
83	57020165	Hollow shaft	1
84	96693800	Washer	4
85	99186700	Screw	4



CPH2525UI  
CPH2530UI

## REPAIR KITS

KIT NO.	K86	K96	K97	K102	K133	K134
POS'S INCLUDED IN KIT	33, 35 36	32-36	32-34 36	6-21	4, 5	2, 3
NUMBER OF ASSEMBLIES IN KIT	3	1	3	1	6, 3	6

\* Decrease torque by 20% if threads are lubricated.

## TORQUES\*

Pos.	Ft/lb
5	2.2
21	3.7
30	7.4
31	7.4
42	36.8
51	14.7
54	29.4
56	5.1
57	15
58	14.7
76	15
85	3.7